

LPG SERIES-GEL Battery

LPG2-300 (2V300AH)

Specification

Nominal Voltage	2V	
Nominal Capacity(10HR)	300.0AH	
Dimension	Length	170±2mm (6.69 inches)
	Width	150±2mm (5.91 inches)
	Container Height	328±3mm (12.91 inches)
	Total Height (with Terminal)	337±3mm (13.27 inches)
Approx Weight	Approx 20.0 kg (44.1lbs)	
Terminal	T11	
Container Material	ABS	
Rated Capacity	326.6 AH/16.33A	(20hr, 1.80V/cell, 25°C/77°F)
	300.0 AH/30.0A	(10hr, 1.80V/cell, 25°C/77°F)
	263.5 AH/52.7A	(5hr, 1.75V/cell, 25°C/77°F)
	237.9 AH/79.3A	(3hr, 1.75V/cell, 25°C/77°F)
	179.6 AH/179.6A	(1hr, 1.67V/cell, 25°C/77°F)
Max. Discharge Current	2100A (5s)	
Internal Resistance	Approx 0.75mΩ	
Operating Temp. Range	Discharge	-20~55°C (-4~131°F)
	Charge	-10~45°C (14~113°F)
	Storage	-20~50°C (-4~122°F)
Nominal Operating Temp. Range	25±3°C (77±5°F)	
Cycle Use	Initial Charging Current less than 75.0A. Voltage	
	2.40V~2.50V at 25°C(77°F)Temp. Coefficient -5mV/°C	
Standby Use	No limit on Initial Charging Current Voltage	
	2.25V~2.30V at 25°C(77°F)Temp. Coefficient -3mV/°C	
Capacity affected by Temperature	40°C (104°F)	103%
	25°C (77°F)	100%
	0°C (32°F)	86%
Self Discharge	Leoch LPG series batteries may be stored for up to 9 months at 25°C(77°F) and then a freshening charge is required.	
	For higher temperatures the time interval will be shorter.	



Applications

- ◆ Telecommunications
- ◆ Solar system
- ◆ Wind power system
- ◆ Engine starting
- ◆ Wheelchair
- ◆ Floor cleaning machines
- ◆ Golf trolley
- ◆ Boats



Constant Current Discharge (Amperes) at 25 °C (77°F)

F.V/Time	20min	30min	45min	1h	2h	3h	4h	5h	6h	7h	8h	9h	10h	20h
1.85V/cell	266.3	209.4	159.6	138.7	88.5	70.1	55.9	48.2	41.6	36.9	33.3	30.4	28.7	15.67
1.80V/cell	305.8	233.9	176.3	153.1	95.8	75.0	59.2	50.7	43.7	38.6	34.9	32.0	30.0	16.33
1.75V/cell	343.5	257.1	190.2	163.5	101.5	79.3	62.1	52.7	45.3	40.0	36.0	32.9	30.6	16.65
1.70V/cell	370.1	275.5	202.0	173.3	107.6	82.6	64.1	54.2	46.8	41.3	37.0	33.8	31.3	16.88
1.67V/cell	384.8	286.5	209.4	179.6	110.4	85.2	65.7	55.4	47.6	41.9	37.6	34.3	31.7	17.04
1.60V/cell	416.9	306.1	224.9	190.7	114.8	88.6	68.1	57.1	48.8	42.8	38.3	35.0	32.3	17.28

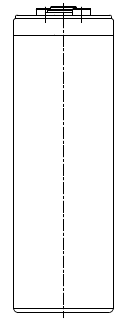
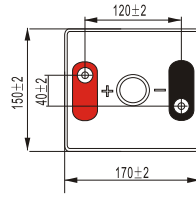
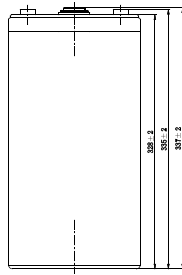
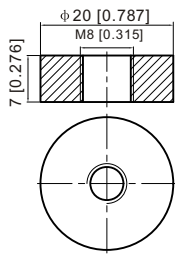
Constant Power Discharge (Watts) at 25 °C (77°F)

F.V/Time	20min	30min	45min	1h	2h	3h	4h	5h	6h	7h	8h	9h	10h	20h
1.85V/cell	505.8	400.3	307.1	267.9	171.5	136.2	109.1	94.5	81.8	72.7	65.7	60.0	56.9	31.0
1.80V/cell	573.1	443.0	336.1	294.2	184.8	145.4	115.2	99.0	85.7	75.8	68.6	63.1	59.3	32.3
1.75V/cell	636.4	481.6	359.3	312.6	195.2	153.3	120.3	102.3	88.3	78.3	70.7	64.9	60.4	32.9
1.70V/cell	678.4	512.4	380.2	330.1	206.1	159.1	123.8	105.2	91.3	80.7	72.7	66.5	61.8	33.3
1.67V/cell	697.3	525.8	390.5	339.4	210.2	163.5	126.5	107.0	92.5	81.7	73.5	67.2	62.4	33.6
1.60V/cell	747.2	558.1	417.2	358.5	217.7	169.3	130.8	110.0	94.5	83.2	74.7	68.5	63.5	34.0

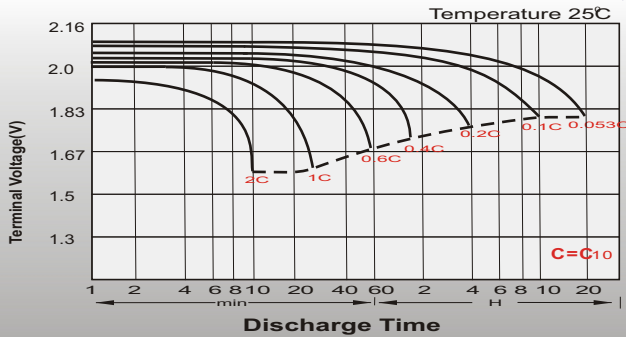
Dimensions

T11 Terminal

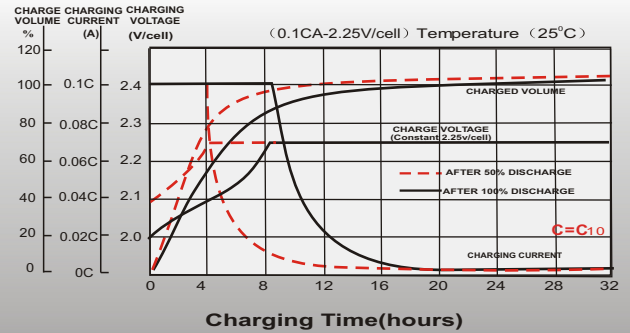
Unit: mm [inches]



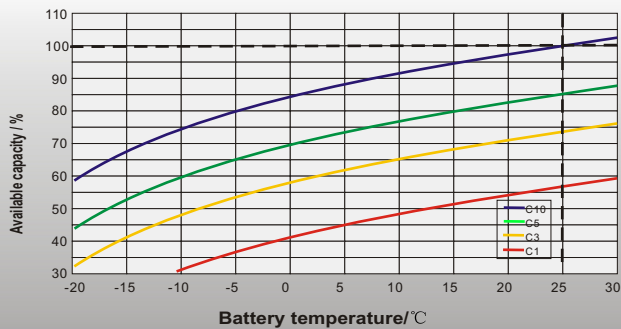
Discharge Characteristics



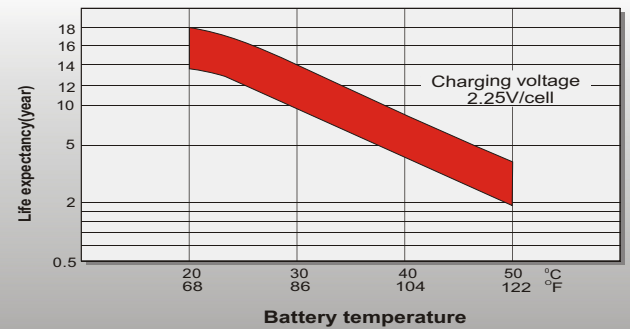
Float Charging Characteristics



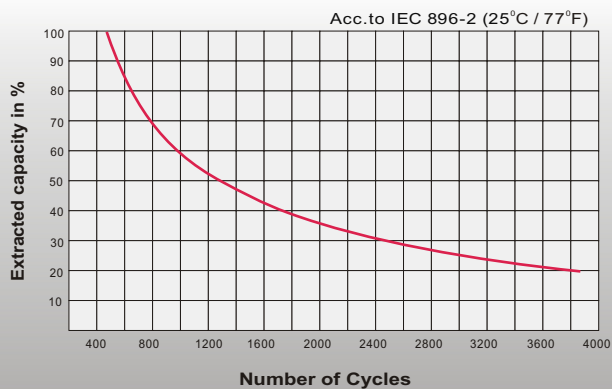
Temperature Effects in Relation to Battery Capacity



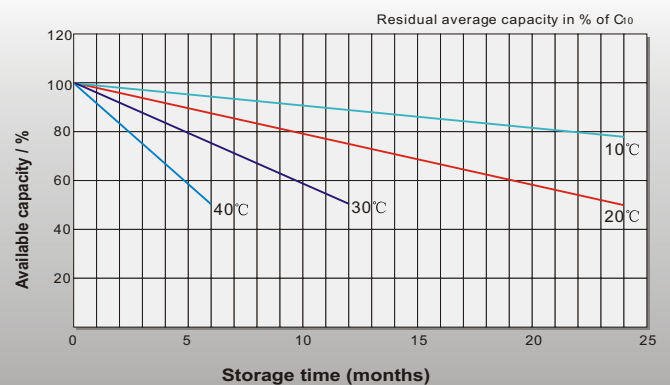
Effect of Temperature on Long Term Float Life



Cycle Life in Relation to Depth of Discharge



General Relation of Capacity VS. Storage Time



Sales Office

China sales office:

Add: 5th Floor, Xinbaohui Bldg., Nanhai Blvd.,
Nanshan, Shenzhen, China. 518052
Tel: +86-755-86036060 (100 lines)
Fax: +86-755-26067269
E-mail: export@leoch.com
Http://www.leoch.com

North America sales office:

Add: 19751 Descartes, Unit A,
Foothill Ranch, CA 92610, USA
Tel: 949-588-5853
Fax: 949-588-5966
E-mail: sales@leoch.us
Http://www.leoch.us

Europe sales office:

Add: 9B Wheatstone Park, Waterwells
Business Park, Gloucester, GL2 2AQ, UK.
Tel: +44(0) 01452 729428
Fax: +44 (0)1452-690125
E-mail: Sales.Europe@leoch.com

Singapore sales office:

Add: No. 1 Tech Park Crescent,
Singapore 638131
Tel: +65 68416629
Fax: +65 68443210
Email sales.sg@Leoch.com

HongKong sales office:

Add: Workshop C, 33/F, TML Tower,
No. 3 Hoi Shing Road, Tsuen Wan,
New Territories, Hong Kong
Tel: +852 3578 6666
E-mail: sales.hk@leoch.com